

PNW MAA Spring Meeting: Western Washington University

*2022 PNW Sectional MAA Meeting
Western Washington University
April 1-2, 2022*

Friday April 1 will include Section NExT activities in the morning, minicourses in the afternoon and an evening public lecture. Saturday April 2 will include invited speakers, MAA special sessions, contributed talks, opportunities for students to present their work and an evening reception. There will also be opportunities for remote participation. We are very much looking forward to the first in person section meeting since 2019.

Invited speakers are Talea Mayo (Emory University) and Jenny Quinn (UW-Tacoma and President of the MAA). Current plans include a minicourse on cryptology and another one on a topic still to be determined. As the schedule comes together, more details will be posted on the meeting website: <https://mathematics.wvu.edu/pnw-maa-2022>

If you are interested in organizing a special session, please contact Yuan Pei at pei@wwu.edu by January 21. There is the possibility of organizing virtual sessions. Abstracts for contributed talks will be solicited in the winter.

Our section has a long tradition of student attendance at section meetings and we hope that many students participate in this meeting. We encourage students to attend and present their work. We particularly hope that students interested in our MS program are able to visit campus during the meeting.



Western Washington University (WWU) is a public master's granting university located in Bellingham, Washington. Bellingham is about 90 miles north of Seattle and 50 miles south of Vancouver, BC. Bellingham is a city of about 91,000 people, with numerous restaurants and hotels. Campus overlooks Bellingham Bay. WWU is easy to get to from I-5. BLI airport is less than ten miles away. Housing options for the meeting will be posted on the website in January.

In This Issue...

- Spring Meeting: Western Washington University
- NExT news
- Editor's Note
- The Great Puzzle Hunt

NExT News: Applications due

by MEGAN BUZBY

The deadline for applications to join the PNW Section NExT is Monday, February 14, 2022. Please share this information if you have a new colleague that might be interested in joining us. The website has the application details. Please feel free to e-mail mbuzby1@alaska.edu if you

have additional questions.

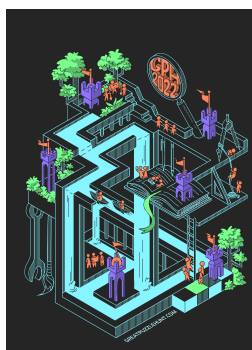
A note from the editor

by KATE KEARNEY

If you have any major changes in your department or University, I'd love to highlight them in an upcoming "University Spotlight" column. Please email me with any contributions or other section news.

Great Puzzle Hunt

The 6th Annual WWU Great Puzzle Hunt: Saturday, April 9, 2022, 9:30 AM – 5:00 PM (PT)



The WWU Great Puzzle Hunt is a fun, full-day, team puzzle-solving event that is OPEN TO ALL! This year, in the interest of safety, the event is hybrid with both in-person participation (available to the WWU campus community only this year) and virtual options. Teams of up to 6 work virtually or travel on foot to various locations on WWU campus solving a total of

four hour-long puzzles, gathering clues along the way to solve one final meta puzzle.

The event is FREE this year, but registration is required. Registration ends 11:59 pm April 8, 2022 or earlier if capacity is reached. Be a part of the fun!

You can also visit our website: <https://www.greatpuzzlehunt.com/>