



# EPADEL

[maa.org/epadel](http://maa.org/epadel)



**Fall Meeting**  
November 6, 2004  
University of Delaware

## PRESIDENT'S MESSAGE

This Fall, we're looking forward to meeting at the University of Delaware on November 6. Besides the usual slate of interesting hour talks, organized by our section Vice President John Meier, and presentations by students, and book displays and sales, there will be a panel discussion for graduate students on one of the questions that is uppermost in their minds: "How to Get a Job". Please encourage colleagues, undergraduates and graduate students to attend - once again, we have some funding from MAA to come to the meeting for free (including lunch) - they can write to me at [deturck@math.upenn.edu](mailto:deturck@math.upenn.edu) to obtain this funding.

Some of the hour talks at this Fall meeting have a distinctly discrete mathematics theme, but in different directions: group theory, geometry, and partitions. And Maria Klawe, Dean of Engineering at Princeton University, will speak about her experiences teaching calculus in a "studio" format. We'll also be holding elections for section officers, including two executive committee members at large.

Visit [www.maa.org](http://www.maa.org) and check out some of the opportunities to participate in the national organization, and to learn about goings-on. The Committee on the Undergraduate Program in Mathematics has just released a new Curriculum Guide, which has been circulated to all departments. The MAA's American Mathematics Competitions (high school competitions that lead to the Olympiad) is looking for volunteers to help create and check new problems and exams. And of course, preparations for the Joint Mathematics Meetings in Atlanta on January 5-8 are proceeding apace.

Finally, you've obviously noticed that we're distributing our Newsletter in a new way this semester. Please let us know if you find this electronic distribution more or less effective and convenient, or if you have suggestions for improving it.

See you in November at Delaware!

# EPADEL GOVERNOR'S REPORT

on the Meeting of the  
BOARD OF GOVERNORS of the Mathematical Association of America  
Providence, RI  
August 11, 2004

The MAA's meeting in Providence proved to be the best attended MathFest in recent memory thanks to strong programming, innovative marketing, and the overall hard work of the MAA offices, committees and staff. A usual, EPADEL members played many key roles both in front of and behind the scenes. The Board of Governors. meeting, chaired by President Ron Graham, provided a leisurely kick-off to the festivities.

- **Financial health of the MAA:**

Treasurer John Kenelly reported that the national MAA has approximately \$7 million worth of real estate in Washington D.C., \$7 million in endowment, a \$7 million annual budget, and \$7 million in external grants. At the national headquarters in Washington, the Carriage House renovations (to provide meeting space) will begin soon under the direction of Jim Gandorf. The renovations are optimistically expected be completed by 2006.

MAA's overall book revenues reached an all-time high (of \$1.39 million) in 2003. Sales through the first half of 2004 are very similar to the comparable period in 2003.

Dues membership is running slightly ahead of this time last year. Electronic membership renewal is now available.

The Board of Governors approved the 2005 budget.

- **National Meetings:**

The following sites for future Joint Mathematics Meetings and MathFest have been approved by the Board of Governors:

August 12 . 14, 2004	Providence, Rhode Island
January 5 . 8, 2005	Atlanta, Georgia
August 4 . 6, 2005	Albuquerque, New Mexico
January 12-15, 2006	San Antonio, Texas
January 4-7, 2007	New Orleans, Louisiana
August 3 . 5, 2007	San Jose, California
January 6-9, 2008	San Diego, California
July 31 . August 2, 2008	Madison, Wisconsin
January 7-10, 2009	Washington, D.C.
January 6 - 9, 2010	San Francisco, California
January 5 - 8, 2011	New Orleans, Louisiana

Management of MathFest will be fully transferred from AMS to the MAA for the 2005 meeting. MAA staff did much of the logistics and coordination of the Providence meeting, and they will be working with AMS to complete the transfer by 2005.

- **New MAA Books:**

The MAA has 10 new books for sale with 7 additional new books in production. Particularly significant among the new books are the *CUPM Curriculum Guide* and the *CUPM Curriculum Foundation Project* report, which were sent to every math department in the country. Director of Publications Don Albers reports that among the top ten MAA books from 2003 is EPADEL member Bill Dunham's *Euler: Master of Us All*. Albers characterizes this as "a great performance for a book that is five years old."

- **Funded programs/workshops:**

The web site [www.maa.org/programs/](http://www.maa.org/programs/) lists the wide variety of externally funded programs sponsored by the MAA. Among these are several focus on professional development opportunities including PMET (Preparing Mathematicians to Educate Teachers), Project ACCESS (Community College Careers: Education, Scholarship and Advancing Service), and the PREP program.

- **American Mathematics Competitions:**

From the AMC website: "The USA team did very well at the competition, winning 5 gold medals and 1 silver medal and finishing 2nd overall among the 85 participating countries. The final team standings had China first, the USA second, followed by Russia at third place. This is the best medal count and highest placing for the USA team since 1994."

- **Participation on National Committees:**

If any Section members are interested in participating on national MAA committees, please send your name, school or other professional affiliation, and a paragraph outlining your interests to your Section Governor. He will send it on to the MAA Secretary.

- **More Information:**

MAA online ([www.maa.org](http://www.maa.org)) contains additional and updated information on all MAA-related activities, including information for students and notices about new publications.

Respectfully submitted,  
Doug Ensley  
EPADEL Section Governor

## **2005 JAMES P. CRAWFORD EPADEL TEACHING AWARD**

**Plan now to nominate a colleague for next year's James P. Crawford EPADEL Teaching Award.**

### **Deadline: December 1, 2004**

There are many excellent teachers of mathematics, but to be recognized by the MAA, they must be nominated by their colleagues.

Please consider nominating a colleague, a respected former teacher, or an inspiring speaker for the 2005 James P. Crawford EPADEL Section Award for Distinguished College or University Teaching. The nomination process is two-tiered. To initiate a nomination, the nominator must submit a one-page nomination form by **December 1, 2004**. The Selection Committee will screen the nominations, and around January 1 will invite some of the nominators to submit full nomination packets. The full packets should be completed with the help of the nominee's department chair, and submitted by February 1, 2005.

Guidelines and a nomination form (which is the cover page for the Haimo award) may be obtained from the MAA at <http://www.maa.org/Awards/haimo.html> or from

Barbara Bendl

University of the Sciences in Philadelphia

600 South 43rd Street

Philadelphia PA 19104-4495,

Telephone: 215-895-1120,

email: b.bendl@usip.edu

**Congratulations to Marvin Brubaker, 2004 James P. Crawford EPADEL Teaching Award winner.**

## **PROJECT NExT-EPADEL**

Project NExT (New Experiences in Teaching) is a national program for new or recent Ph.D.s in the mathematical sciences who are interested in improving the teaching and learning of undergraduate mathematics. Project NExT-EPADEL is the Eastern Pennsylvania & Delaware Section's version of the program. Faculty members in our section who are within their first three years of teaching full time at a university, four-year or two-year college are invited to apply to become Project NExT-EPADEL Fellows. In addition, Ph.D. students in our section who are within one year of completing their degree are invited to apply.

For more information please see the NExT-EPADEL web page, [www.ship.edu/deensl/NExT-EPADEL/](http://www.ship.edu/deensl/NExT-EPADEL/)

## ATTENTION GRADUATE AND UNDERGRADUATE STUDENTS

The EPADEL Section's Fall Meeting will be held at the University of Delaware on November 6. A detailed program can be found elsewhere in this Newsletter. Become involved with the regional mathematics community and attend this meeting! The registration fee for undergraduates is only \$5, and **graduate students are free!** (contact President DeTurck for information) In addition to the invited talks, students may find the MAA book exhibit particularly interesting.

### Give a Talk at the Fall Meeting

The Eastern Pennsylvania and Delaware Section (EPADEL) of the Mathematical Association of America invites students to present ten minute talks on mathematics-related topics during EPADEL's Sectional Fall Meeting at the University of Delaware, Newark, DEL on Saturday, November 6, 2004. The talk should fall into one of the three categories described below.

- **Expository:** (e.g., historical topics in mathematics, mathematical problems, applications, an article from a mathematics journal, pedagogy, school mathematics curricula, teaching and learning of mathematics)
- **Mathematical Activity:** (e.g., problems, modeling contests, Student Chapter or math club activities, internships or summer employment)
- **Research:** (e.g., problems solved or attempted, honors projects) All speakers are expected to present topics at a level geared to an undergraduate audience.

Applications must include the cover page found at the end of this newsletter, or on our website [maa.org/epadel](http://maa.org/epadel). Applications must be received by **Friday, October 22, 2004**. Notification of speaking status will be made by mail shortly thereafter.

Student speakers will receive a one year membership to the MAA, a waiver of registration fee for the meeting and a Certificate of Recognition from the Mathematical Association of America. Inquiries should be directed to Professor Egge, student speaker coordinator.

### 2005 Student Mathematical Paper Competition

Many EPADEL undergraduate students will be writing mathematical papers during the 2004-2005 academic year, in the form of honors theses, project reports, course essays, or to report on their own independent research. Please encourage your best students to enter their papers in the Student Mathematical Paper Competition. Papers on any mathematical topic are eligible. Entries must have been written by undergraduate students at schools in the EPADEL area (Eastern Pennsylvania and Delaware). Papers may be expository or may present original research, and should be no more than about 20 pages in length. Jointly authored papers by undergraduate students are also eligible.

Each submission should include the author's name and address and the name of a faculty sponsor, and should be mailed by June 30, 2005 to

Samir Ouzomgi  
Department of Mathematics

Penn State-Abington College  
Abington, PA 19001  
(215) 881-7300  
FAX: (215) 881-7333  
email: ouzomgi@psu.edu

The papers will be judged over the summer. The winning author(s) will be recognized at the MAA EPADEL Section's Fall 2005 meeting, and will receive a prize of \$200.

## MAA Student Chapters

Do you have an MAA Student Chapter on your campus? If you don't, consider starting one. You'll need a minimum of five students and a faculty advisor. For information contact Alicia Sevilla, EPADEL Student Chapters Coordinator, at [sevillaa@moravian.edu](mailto:sevillaa@moravian.edu).

## Dates to Remember

- October 22, 2004 – Deadline for submitting a talk for Epadel's Fall meeting.
- February 19, 2005 – Undergraduate conference at Moravian College. [math.moravian.edu/conference](http://math.moravian.edu/conference)
- April 16, 2005 – Spring Epadel meeting at Lafayette College.

## MAA FALL MEETING BOOK SALE

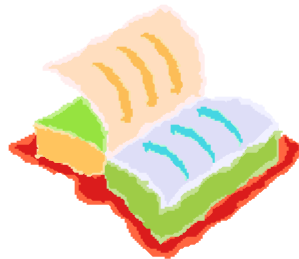
Assortment of Recent Titles for Examination

SPECIAL DISCOUNT PRICES

Purchase Display Books & Enjoy Them Immediately

Order Books Postage-Free

!! Get great books and benefit EPADEL simultaneously !!



# SCHEDULE FOR THE FALL MEETING AT THE UNIVERSITY OF DELAWARE

**November 6, 2004**

## Morning

Registration Purnell Hall Lobby	8:30-10:00
Welcoming Remarks David Roselle, President University of Delaware	9:00-9:15
<i>Rip van Winkle Teaches Calculus in Studio Format</i> Maria Klawe, Princeton University	9:15-10:15
Coffee & snacks break - MAA book displays Purnell Hall Lobby	10:15-10:45
<i>Group theory is dead; Long live group theory</i> Andrew Woldar, Villanova University	10:45-11:45
Student Papers For information on presenting a paper look in the student section of this newsletter	10:45-11:45
Business Meetings and Elections	11:45-12:15
Lunch Trabant Student Center Main Cafeteria	12:15-1:30

## Afternoon

<i>Noncrossing partitions in surprising locations (or how to find parking when not commuting)</i> Jon McCammond, University of California at Santa Barbara	1:30-2:30
Student Papers	1:30-2:30
<i>The Mysterious Mr. Ammann</i> Marjorie Senechal, Smith College	2:45-3:45
<i>How to get a job</i> A panel discussion directed toward graduate students	2:45-3:45
Social Time	3:45-4:30

## ABSTRACTS OF INVITED TALKS

- *Rip van Winkle Teaches Calculus in Studio Format* , Maria Klawe, Princeton University
- *Group theory is dead; Long live group theory* , Andrew Woldar, Villanova University
- *Noncrossing partitions in surprising locations (or how to find parking when not commuting)* , Jon McCammond, University of California at Santa Barbara
- *The Mysterious Mr. Ammann* , Marjorie Senechal, Smith College

### *Rip van Winkle Teaches Calculus in Studio Format*

**Maria Klawe, Princeton University**

**Abstract:** This talk describes my experience in teaching an experimental calculus section at Princeton. This experience is a novel one for me in many ways. It's my first time teaching calculus in more than 25 years and my first time teaching at Princeton. It's also my (and Princeton's) first time for teaching calculus in a studio format with alternation among various activities: lecture, small group problem solving, cameo presentations by scientists and engineers on applications of calculus, and eating (the class is from 11 a.m. to 1 p.m. on Tuesdays and Thursdays). The goal of this approach is to reduce the attrition rate in first year engineering students with particular attention to women and under-represented minorities for whom the rate is roughly double that of white males. The class is open to non-engineers as well and we hope it will also increase their interest and achievement in mathematics.

**Biography:** Maria Klawe is Dean of Engineering and Professor of Computer Science at Princeton University. From 1988 to 2002 Maria held various positions at the University of British Columbia including Dean of Science and Head of Computer Science. Prior to UBC, Maria spent eight years with IBM Research in California. She received her Ph.D. (1977) and B.Sc. (1973) in Mathematics from the University of Alberta. Maria has made significant research contributions in several areas of mathematics and computer science including functional analysis, discrete mathematics, theoretical computer science, and the design and use of interactive-multimedia for mathematics education. She is Past President of the Association for Computing Machinery, Chair of the Board of Trustees of the Anita Borg Institute for Women and Technology, and a trustee of IPAM and MSRI. Maria likes to spend her spare time with her two children (Janek, 22 and Sasha, 19), and husband, Nick Pippenger (a theoretical computer scientist). She is also a dedicated watercolor artist, runner and kayaker.

### *Group theory is dead; Long live group theory*

**Andrew Woldar, Villanova University**

**Abstract:** If you believe that the classification of finite simple groups is correct, then you may well believe that group theory has outlived its purposefulness. (If not, you may find yourself in the minority!) Recalling the often cited analogy of groups and integers, correctness of CFSG means that we understand all "primes," however the problem of understanding all "composites" is utterly hopeless. In addition, we have the following bit of irony: One needs virtually no expertise in group



theory to reap the full benefits of CFSG. This begs the question "What does the future hold for the practicing group theorist?" In this talk we explore some unexpected ways in which groups have recently emerged as a tool to solve problems from other disciplines.

**Biography:** Andrew Woldar received his PhD from the Ohio State University in 1984 and joined the faculty of Villanova University the following year. Being formally trained as a group theorist, he specializes in applications of groups to a variety of mathematical areas including topology, algebraic combinatorics, graph theory and incidence geometries. In addition to his advisor Ronald Solomon, Woldar counts among his mentors Eiichi Bannai, Dijen RayChaudhuri, Neil Robertson, Henry Glover, and the (late) Hans Zassenhaus. He considers himself extremely fortunate to have been able to collaborate with such wonderful people as Joe Hemmeter, Felix Lazebnik, Gary Ebert, Vasyl Ustimenko, and Mikhail Klin, all of whom have become life-long friends. Woldar is a member of the Institute for Advanced Study, and the 1996 recipient of Villanova's Outstanding Researcher Award.

### *Noncrossing partitions in surprising locations (or how to find parking when not commuting)*

**Jon McCammond, University of California at Santa Barbara**

**Abstract:** Certain mathematical structures make a habit of reoccurring in the most diverse list of settings. A list of examples might include the catalan numbers, the quaternions, and the modular group. In this talk, I will focus on a lesser known example which exhibits this intrusive type of behavior: the non-crossing partition lattice. The talk will consist of a gentle introduction to the lattice itself and three of its many guises: as a way to count the parking functions defined by combinatorialists, as a key part of the foundations of non-commutative probability, and as a building block for a contractible space acted on by the braid groups. Finally, as the talk is aimed primarily at non-specialists, all of the areas listed above will be introduced as they arise.

**Biography:** Like the noncrossing partition lattice, Jon McCammond has interacted with a diverse list of areas. Although his research is focused primarily on geometric group theory, he has a more than passing interest in geometric combinatorics (particularly polytopes), theoretical computer science (particularly finite state automata) and differential geometry (particularly the geometry of symmetric spaces).

The academic settings Jon has found himself in have been similarly diverse. His undergraduate is from Bethel College in Kansas, a small private liberal arts college; his graduate degrees are from the University of California at Berkeley. After six years of teaching at a community college in the San Francisco bay area (Chabot College in Hayward), Jon spent five years at Texas A&M University. He is currently an associate professor at the University of California, Santa Barbara. This somewhat unusual career trajectory is at least partially explained by the fact that Jon and his domestic partner, the socio-linguist Mary Bucholtz, have successfully negotiated the two-body problem since they met in graduate school.

### *The Mysterious Mr. Ammann*

**Marjorie Senechal, Smith College**

**Abstract:** Ammann tiles A1 - A5, Ammann bars, Amman's alternating conditions, Ammann's

space-filling rhombohedra: in the theory of aperiodic tilings, "Ammann" is a much-used adjective. But who was Ammann? In this talk I will describe Robert Amman's work and why it matters. And his too-brief life, and why it matters.

**Biography:** Marjorie Senechal grew up in Lexington, Kentucky. She received a B.S. from the University of Chicago and M.S. and Ph.D. degrees from the Illinois Institute of Technology. She has taught mathematics at Smith College since 1966, where she is now Louise Wolff Kahn Professor in Mathematics and History of Science and Technology, and Director of the Kahn Liberal Arts Institute.

**Fall Meeting of EPaDEL - November 6, 2004**  
 University of Delaware - Newark, DE  
**REGISTRATION FORM**

Name \_\_\_\_\_

First Time Attendee?

Email \_\_\_\_\_

yes  no

School \_\_\_\_\_

Status:  High School Instructor  Undergraduate Student  Graduate Student

2-year College Faculty  4-year College Faculty  Emeritus

Registration Fee:

- \$18.00 (\$20.00 on-site)
- \$ 2.00 (students, emeriti, and unemployed)
- \$ 0.00 (full-time faculty who are first-time attendees)

\$ \_\_\_\_\_

Lunch on Saturday, November 6, 2004  
*in Trabant Student Center Main Cafeteria*

\$ a la carte

Total: \$ \_\_\_\_\_

----- (detach here & save map) -----



**PARKING:**

Parking will be available in the Trabant Parking Garage (#17 next to the Trabant Student Center on W. Main St.). The cost for the day is \$2.00 payable the day of the meeting.

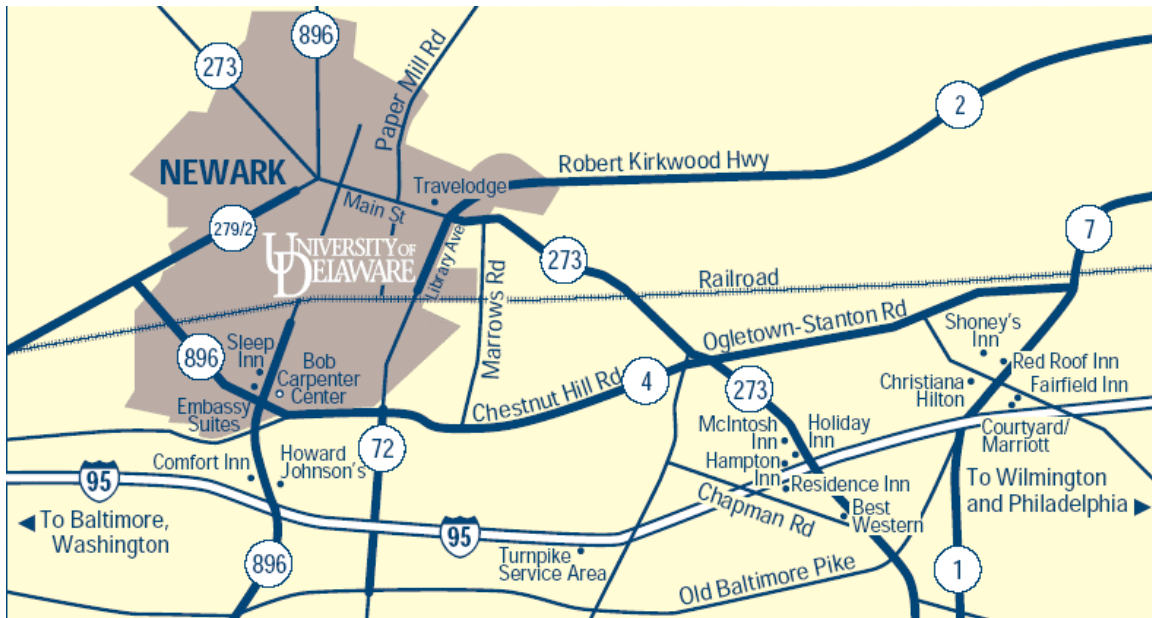
Once in the garage, walk southeast (*opposite* from the direction you entered). You pass Munroe Hall on the right. Pedestrian traffic is regulated at the traffic signal on the corner of W. Delaware Ave. and Orchard Rd. Continue on Orchard Rd. Purnell is the second building on the left. Walk around the building to the front entrance and Registration/Welcome will be in the lobby.

Send pre-registration and a check payable to **EPaDEL** to:

**Elizabeth Miller**  
 Department of Mathematical Sciences  
 301 Ewing Hall  
 University of Delaware  
 Newark, DE 19716

**PRE-REGISTRATION DEADLINE: Friday, October 29, 2004**

These directions will lead you to the Trabant Parking Garage, which is the visitor parking lot closest to Purnell Hall. Purnell Hall is directly southeast of the garage. A campus map of the vicinity of Purnell Hall is included below (**Map 2**).



**Map 1**

### **From the South and West**

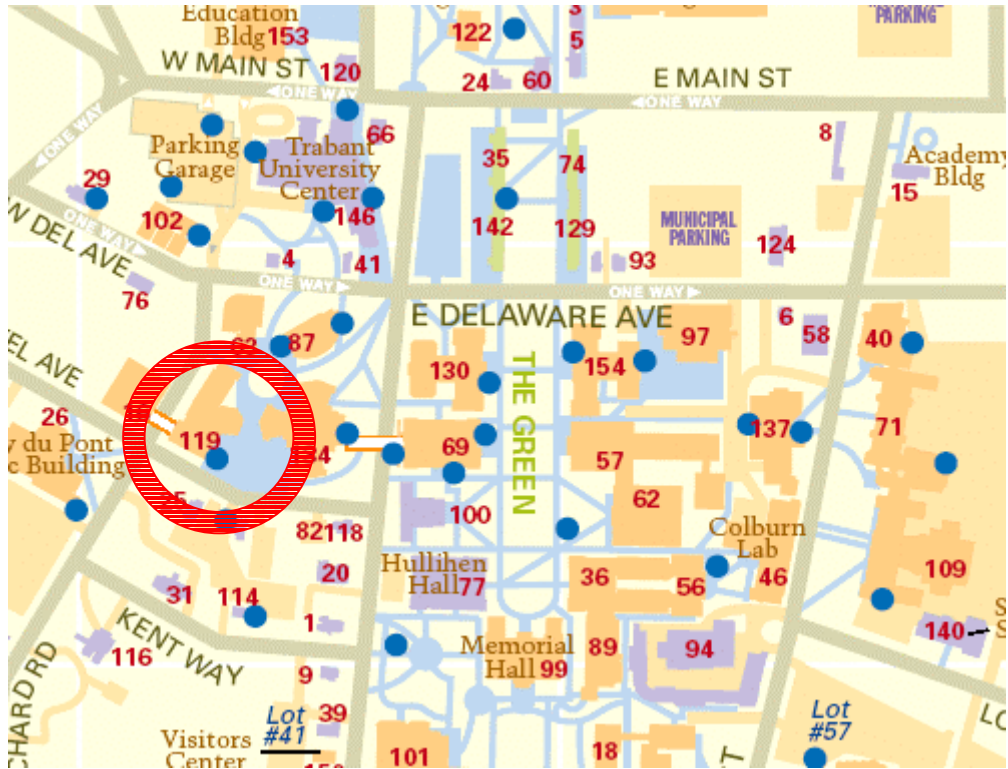
Take I-95 north to exit 109B (Route 279, the last exit in Maryland). Stay on 279 (Elkton Road) for 4 1/2 miles, at which point you must turn right onto Delaware Avenue. At the first light you will see the parking garage on your left (though you can't enter this way) and Ewing Hall on your right. Turn left at the second light (South College Avenue). You must then turn left onto Main Street, and the garage entrance will be on your left.

### **From the North and East**

Take I-95 south to exit 1B (Route 896 north). Stay on 896 for 3 miles, at which point you must turn left onto Main Street, and the garage entrance will be on your left.

### **From the Northwest**

Take Route 896 south to Cleveland Avenue. Make a left on Cleveland to North College Avenue (about 1/4 mile). Make a right on North College. Stay on North College for 1/4 mile, at which point you must turn right onto Main Street, and the garage entrance will be on your left.



Map 2

Parking will be available in the Trabant Parking Garage (next to the Trabant Student Center on W. Main St.). The cost for the day is \$2.00 payable the day of the meeting.

Once in the garage, walk southeast (*opposite* from the direction you entered). Outside you pass Munroe Hall (#102) on the right. Pedestrian traffic is regulated at the traffic signal on the corner of W. Delaware Ave. and Orchard Rd. Continue on Orchard Rd. Purnell is the second building on the left (#119). Walk around the building to the front entrance and Registration/Welcome will be in the lobby.

## EPADEL SECTION OFFICERS

### **President**

Dennis DeTurck (2004)  
Department of Mathematics  
University of Pennsylvania  
209 S. 33rd St.  
Philadelphia, PA 19104-6395  
(215) 573-9036  
deturck@math.upenn.edu

### **Vice President**

John Meier (2004)  
Department of Mathematics  
Lafayette College  
Easton, PA 18042  
(610) 330-5570  
meierj@lafayette.edu

### **Secretary-Treasurer**

Barbara Bendl  
University of the Sciences in  
Philadelphia  
600 South 43rd Street  
Philadelphia, PA 19104-4495  
(215) 895-1112  
email: b.reilly@usip.edu

### **Section Governor**

Douglas Ensley (2007)  
Shippensburg University of Penn-  
sylvania  
Department of Mathematics  
Shippensburg, PA 17257-9749  
(717) 477-1477  
email: deensl@ark.ship.edu

### **Governor Ex-Officio (Chair, Committee on Sec- tions)**

Nancy Hagelgans (2007)  
Department of Mathematics  
Ursinus College  
Collegeville, PA 19426-1000  
(610) 489-4111  
email: Nhagelgans@ursinus.edu

## **Committee Members at Large**

Elizabeth Mauch (2004)  
Department of Math, CS, & Stat  
Bloomsburg University  
Bloomsburg, PA 17815  
(570) 389-4103  
email: emauch@bloomu.edu

Felix Lazebnik (2004)  
Department of Math Sciences  
University of Delaware  
Newark, DE 19716  
(302) 831-1867  
email: lazebnik@math.udel.edu

James Fink (2005)  
Department of Computer Science  
Gettysburg College  
300 N Washington Street  
Gettysburg, PA 17325-1486  
(717) 337-6630  
email: jfink@gettysburg.edu

Linda McGuire (2005)  
Department of Mathematics  
Muhlenberg College  
2400 W. Chew Street  
Allentown, PA 18104  
(484) 664-3351  
email: lm McGuire@muhlenberg.edu

Robert Styer(2006)  
Department of Mathematics  
Villanova University  
800 Lancaster Avenue  
Villanova, PA 19085-1699  
(610) 519-4850  
email: robert.styer@villanova.edu

Mazen Shahin (2006)  
Delaware State University  
Department of Mathematics  
1200 N Dupont Highway  
Dover, DE 19901  
(302) 857-7055  
email: mshahin@desu.edu

## Other Members

### Newsletter Editor

Michael Fraboni  
Department of Mathematics  
Moravian College  
Bethlehem, PA, 18018-6650  
(610) 861-1605  
email: mfraboni@moravian.edu

### Public Information Officer

Trisha Moller  
Department of Mathematics  
DeSales University  
Center Valley, PA  
(610) 282-1100 ext 1681  
email: trisha.moller@desales.edu

### EPADEL Webmaster

Jerry Porter  
Department of Mathematics  
University of Pennsylvania  
209 S. 33rd Street  
Philadelphia, PA 19104-6395  
(215) 898- 8467  
email: GJPorter@math.upenn.edu

### Student Chapter Coordinator

Alicia Sevilla  
Department of Mathematics  
Moravian College  
1200 Main Street  
Bethlehem, PA 18018  
email: sevillaA@moravian.edu

### MAA Book Display Coordinator

Amy Kimchuk  
Univ of the Sciences in Philadelphia  
600 South 43rd Street  
Philadelphia, PA 19104-4495  
(215) 596-8705  
email: a.kimchu@usip.edu

### Section NExT Coordinator

Lisa Marano  
West Chester Univ of Pa  
West Chester, PA  
(610)-738-9499  
email: lmarano@wcupa.edu

### Student Paper Competition Coordinator

Samir Ouzomgi  
Department of Mathematics  
Penn State-Abington College  
Abington, PA 19001  
(215) 881-7300  
email: ouzomgi@psu.edu

### Student Speaker Coordinator

Eric Egge  
Department of Mathematics  
Gettysburg College  
300 North Washington Street  
Gettysburg, Pennsylvania 17325  
(717) 337-6655  
email: eegge@gettysburg.edu

### Workshop Coordinator

Marvin L. Brubaker  
Department of Mathematical Sciences  
Messiah College  
Grantham, PA 17027  
(717) 766-2511, ext. 3790  
email: mbrubake@messiah.edu

### Speaker and Consultant Program

John Polhill  
Department of Mathematics and  
Computer Science  
Bloomsburg University  
Bloomsburg, PA 17815  
email: jpolhill@bloomu.edu

# Student Contributed Talks

## Cover Page

This cover page **MUST** be included as part of the application for giving a student contributed talk. Responses to these questions will not affect eligibility for acceptance of a presentation. All personal information will be kept confidential.

Please type or print clearly.

Name \_\_\_\_\_ Faculty Sponsor \_\_\_\_\_

Email \_\_\_\_\_ Institutional Affiliation \_\_\_\_\_

Mailing Address \_\_\_\_\_

\_\_\_\_\_

Telephone \_\_\_\_\_

Title of Talk (be concise) \_\_\_\_\_

Category (check one)       Expository     Mathematical Activity     Research

A blackboard, overhead projector for transparencies, and computer/overhead system for PowerPoint will be provided. Will your presentation require any other equipment? If so, please specify.

Do you have a preference for the scheduling of your talk? (Requests will be considered, but cannot be guaranteed.)

Morning       Afternoon       Does not matter

Send this **cover page** and a **one page outline** of your talk to

Eric Egge  
Department of Mathematics  
Gettysburg College  
300 N. Washington Street  
Gettysburg, PA 17325

eegge@gettysburg.edu

**Deadline: Applications must be received by Friday, October 22, 2004.**

---

Date Received:

For EPADEL Use

Accepted       Rejected (give reason)